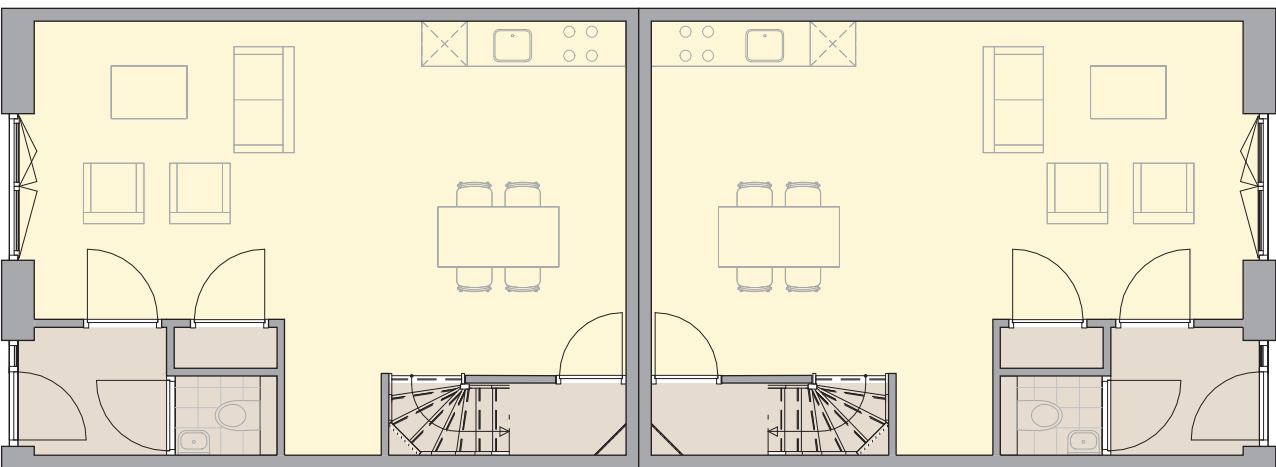
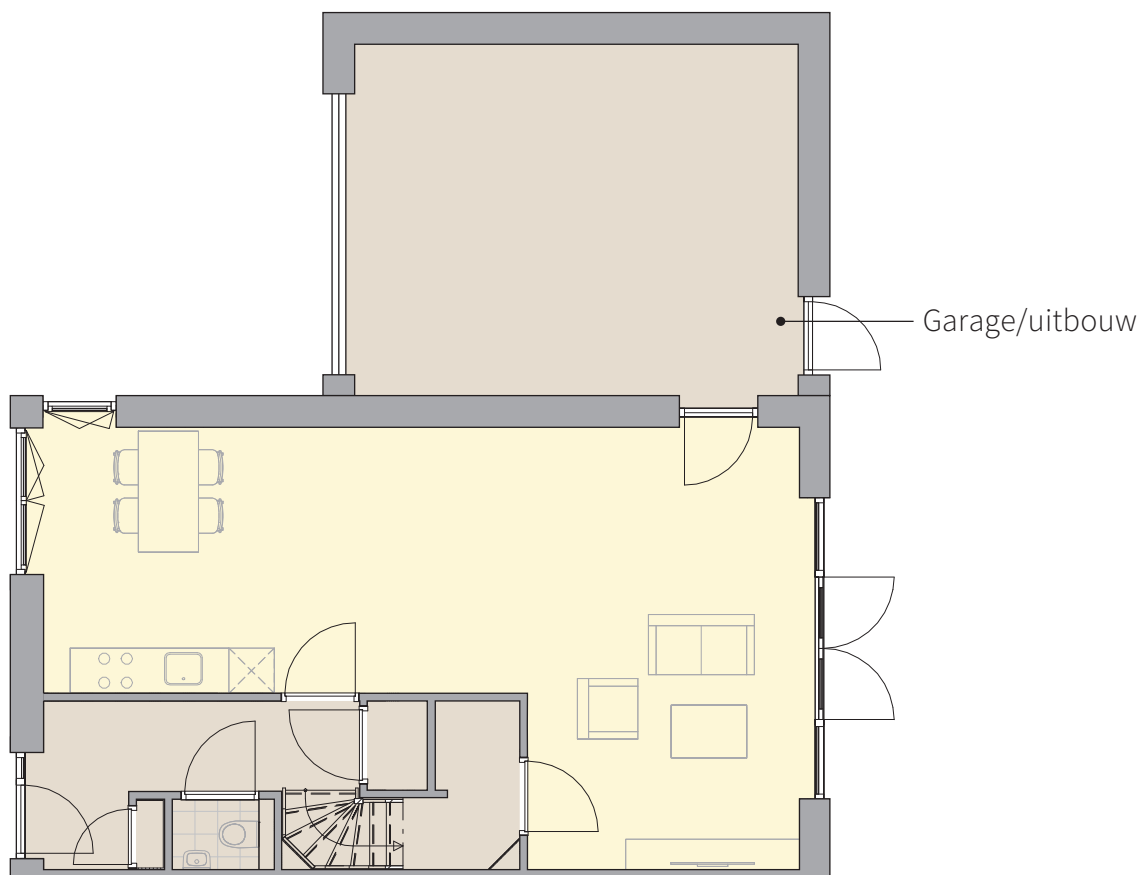


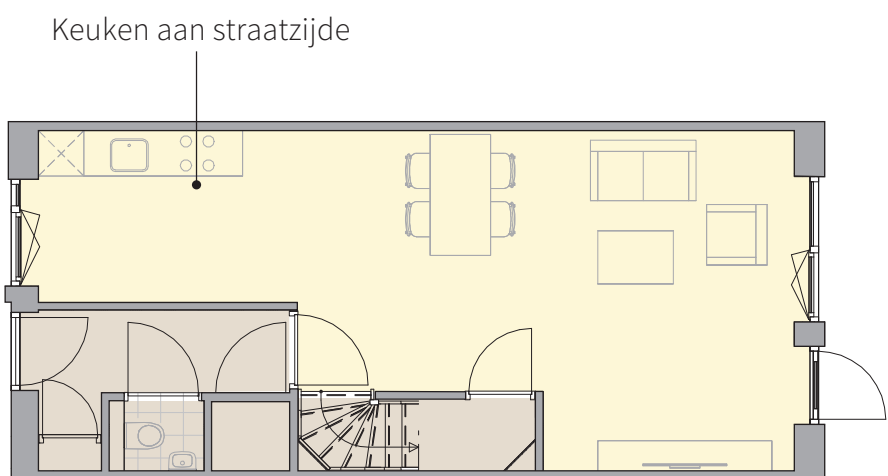
WONING TYPES



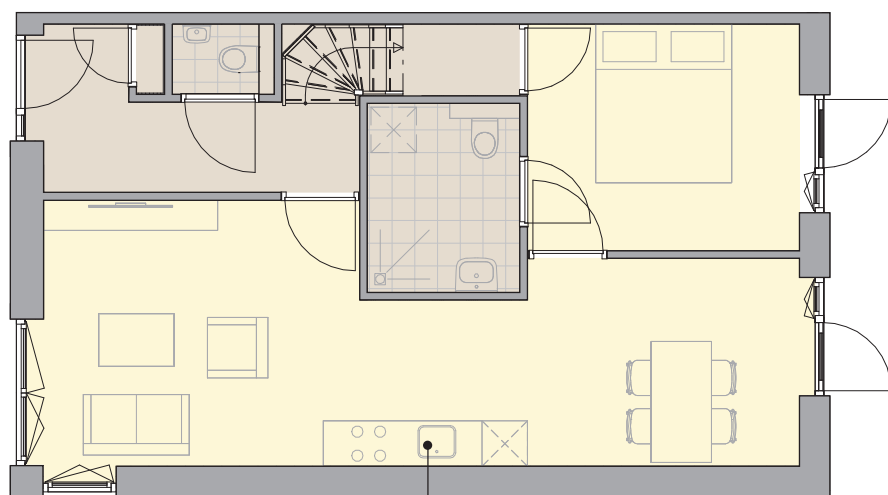
Rug aan rug woning



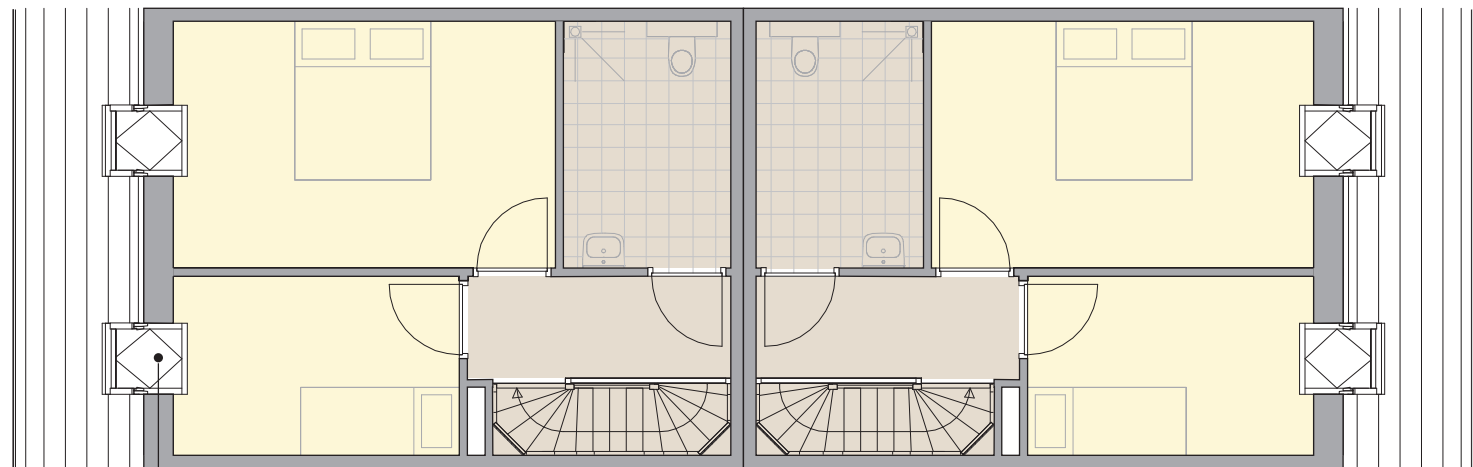
Twee onder een kap



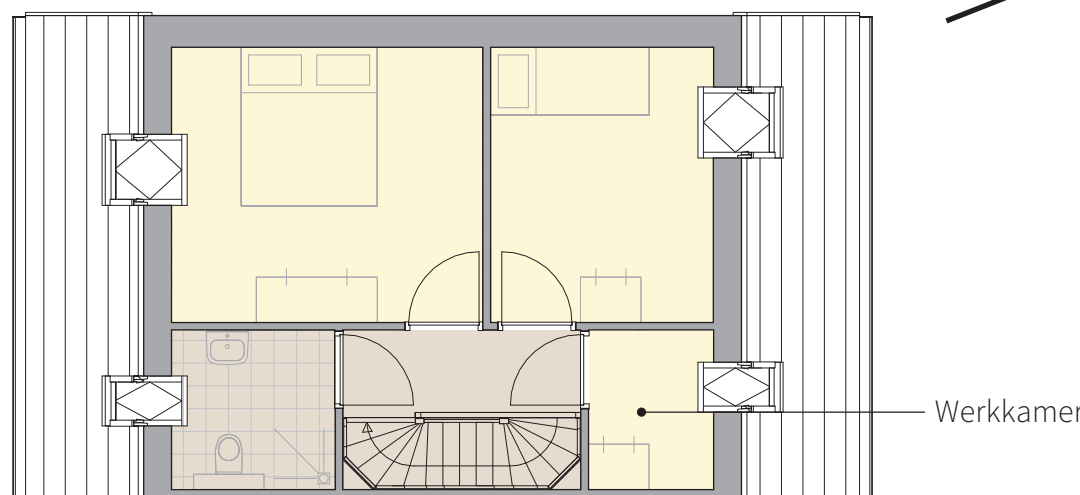
Rijtjes woning



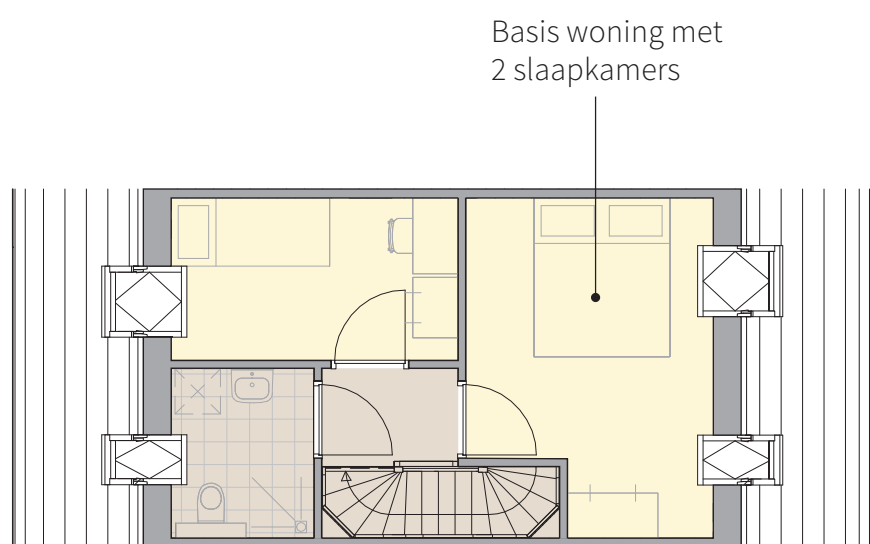
Levensbestendige woning



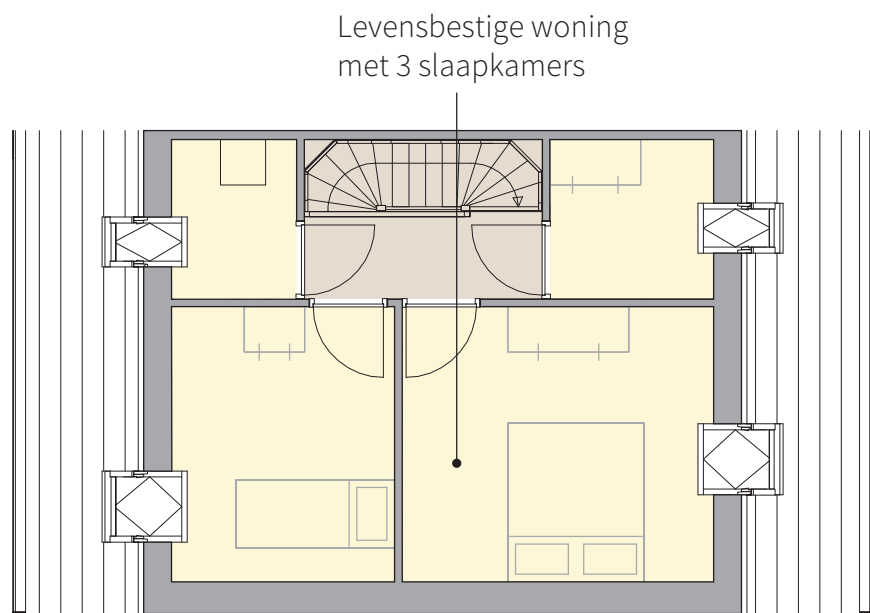
Ruimte voor dakkapel



Werkkamer



Basis woning met 2 slaapkamers



Levensbestendige woning met 3 slaapkamers

Begane grond

Eerste verdieping



ONTMOETEN



NATUUR &
DUURZAAMHEIDS
MOGELIJKHEDEN

